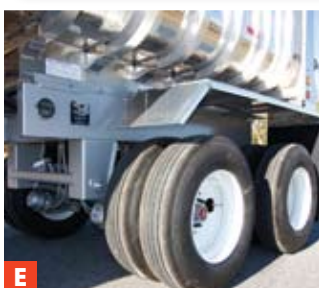
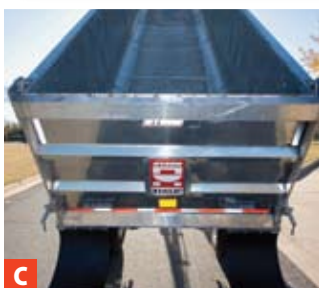




HAUF ALUMINUM FRAMELESS

- **PERFECT DUMP FOR SAND AND GRAVEL**
- **24- TO 40-FOOT LENGTHS**
- **CUSTOMIZATION AVAILABLE**

Look what's back: The most rugged, dependable and popular dump trailer to ever be manufactured. The HAUF™! Now available new, with improvements, from STECO.



THE HAUF ALUMINUM FRAMELESS FEATURES

- **A:** External cylinder mount shown, also available with internal cylinder mount.
- **B:** Side posts are 6061T6 Extruded Hat Channel.
- **C:** Top-hinged tailgate standard, high-lift and barndoor optional
- **D:** Customizable widths and lengths to suit your needs.
- **E:** Heavy-duty suspension, spring or air, with multiple wheel and tire choices.
- **F:** Floor made with 1/8" to 3/8" 6061 aluminum.

BUILT ON TRADITION

Customized as you require.

| | |
|-----------------|--|
| Body Type | Hauf |
| Length | 24' to 40' |
| Width (overall) | 96" to 102" |
| Sides | 48" to 72" |
| Top Rail | 6061T6 Extruded Tubing |
| Side Posts | 6061T6 Extruded Hat Channel |
| Floor | 1/8" to 3/8" — 6061 |
| Cylinder | Multi-Stage, based on trailer length |
| Tailgate | Top-Hinged or Barn-Door |
| Ladder(s) | Per Customer Request |
| Tarp Carrier | Per Customer Request |
| Cat Walk | Per Customer Request |
| Chassis | Frameless Draft-Arm |
| Axles | 5" Round x 5/8" wall, 25,000# Capacity, 71 1/2" or 77 1/2" Track |
| Brakes | 16.5" x 7" air with auto slack, ABS, System 2S/IM |
| Wheels | 10 Stud Hubs (Hub Piloted) |
| Rims | 8.25 x 22.5 or 24.5 Steel Disc as ordered |
| Tires | Per Customer Request |
| Suspension | Spring- or Air-Ride, per Customer Request |
| King Pin | 18" on a 3/8" Pin Plate |
| Landing Gear | Drop Leg style |
| Tire Carrier | Per Customer Request |
| Lights | Sealed LED System |
| Mud Flaps | Rubber Rear |
| Bumper | ICC |
| Paint | Per Customer Request |



2215 South Van Buren • Enid, Oklahoma 73701
 Telephone (800) 627-8326, (580) 237-7433 • Fax (580) 242-1635
www.stecotrailers.com
 A DIVISION OF BLUE TEE CORP

DEALER USE